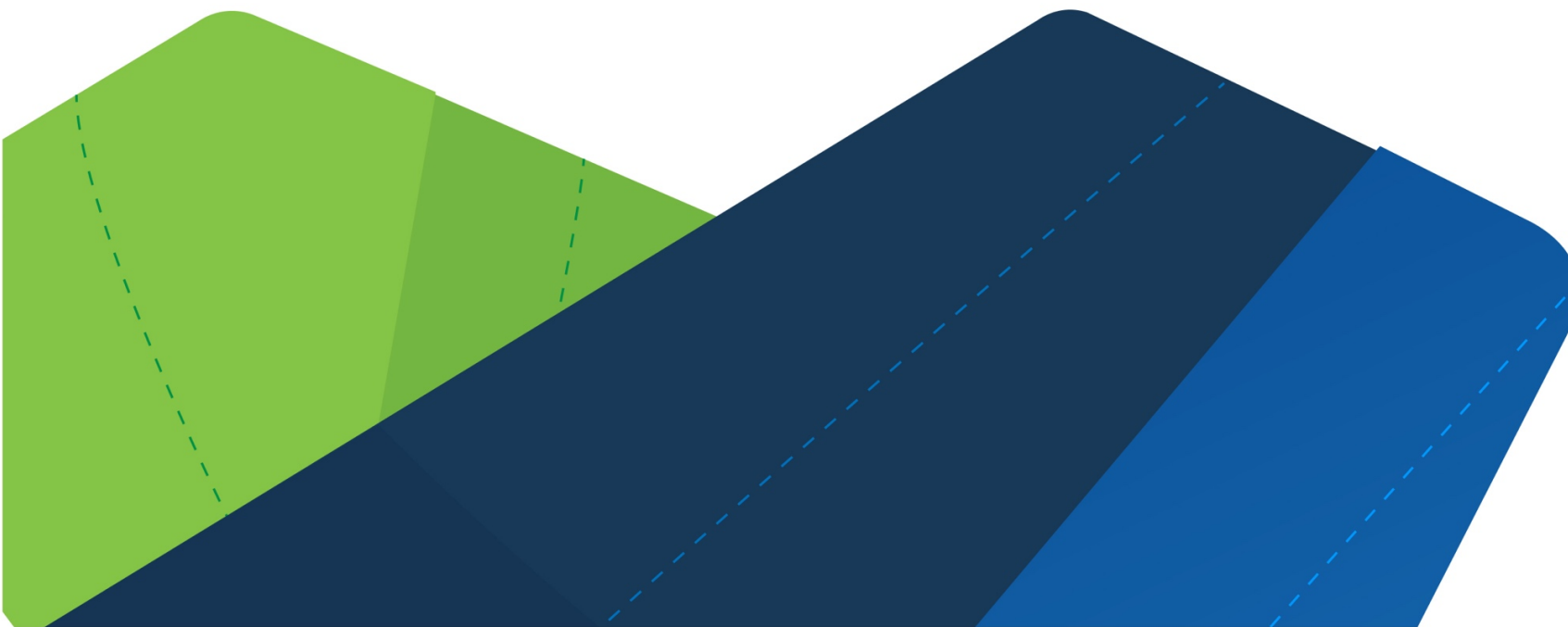


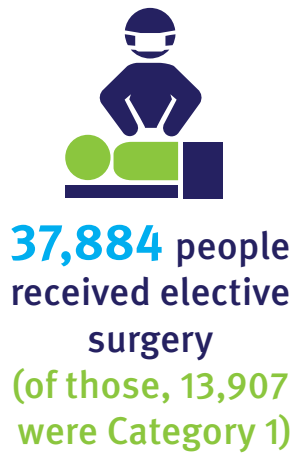
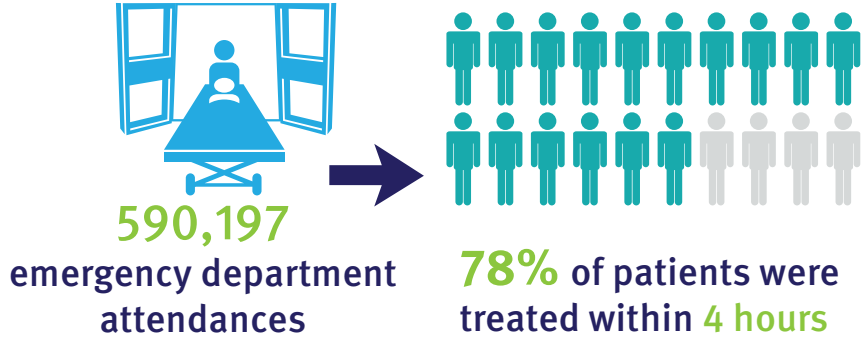
# Snapshot of hospital performance

Quarterly comparison – September 2020

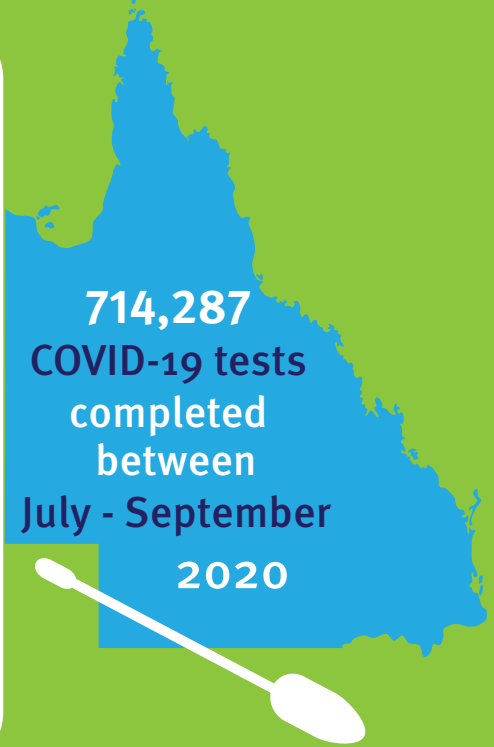


# Key achievements

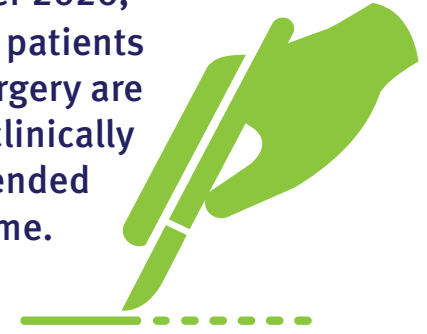
## System performance during COVID-19



HHS of Residence	Total
Cairns and Hinterland	24,303
Central Queensland	18,157
Central West	775
Darling Downs	33,025
Gold Coast	90,089
Interstate/Overseas	14,012
Mackay	11,558
Metro North	162,882
Metro South	223,702
North West	3,569
South West	2,321
Sunshine Coast	44,752
Torres and Cape	2,442
Townsville	26,622
West Moreton	65,480
Wide Bay	17,598



At 1 October 2020, **96.9%** of patients ready for surgery are within the clinically recommended wait time.



July – Sept 2020

## Emergency Departments – Statewide quarterly performance comparison (Sept 2020 v Sept 2019)

### September 2020

Measure	Category 1	Category 2	Category 3	Category 4	Category 5	Total
Number of attendances	4,339	82,058	206,538	194,480	102,782	590,197
Patients seen within clinically recommend times	100%	74%	74%	88%	99%	83%
	Target 100%	Target 80%	Target 75%	Target 70%	Target 70%	Target NA
Median waiting time to treatment (in minutes)	0	7	15	14	10	12
Percentage of patients who did not wait for treatment	0%	0%	2%	3%	2%	2%
Patients admitted from the Emergency Department	75%	57%	41%	13%	2%	28%
Admissions to hospital within four hours	55%	57%	55%	61%	79%	57%
Patients whose ED stay was within four hours	56%	62%	67%	87%	98%	78%
Percentage of patients who left after treatment commenced	1%	2%	2%	2%	0%	2%
Number of patients who left after treatment commenced	44	1,351	4,969	3,258	487	10,109

### September 2019

Measure	Category 1	Category 2	Category 3	Category 4	Category 5	Total
Number of attendances	4,689	79,470	225,645	178,600	49,183	537,587
Patients seen within clinically recommended times	100%	73%	66%	79%	96%	74%
	Target 100%	Target 80%	Target 75%	Target 70%	Target 70%	Target NA
Median waiting time to treatment (in minutes)	0	7	19	22	14	16
Percentage of patients who did not wait for treatment	0%	0%	3%	5%	5%	3%
Patients admitted from the Emergency Department	76%	62%	40%	14%	4%	32%
Admissions to hospital within four hours	53%	56%	51%	55%	74%	53%
Patients whose ED stay was within four hours	54%	60%	64%	83%	95%	73%
Percentage of patients who left after treatment commenced	1%	2%	3%	3%	1%	3%
Number of patients who left after treatment commenced	48	1,298	7,445	4,808	714	14,313

**Source:** Queensland Health Emergency Data Collection, HBCIS EMG Module, Noosa ED Med32 System

**Notes:** Statewide scope of facilities has expanded to include services that do not report to the Queensland Health Emergency Data Collection to align with performance reported in state service level agreements.

[View all measure indicators here](#)

## Elective Surgery – Statewide quarterly performance comparison (Sept 2020 v Sept 2019)

### Quarterly elective surgery information by urgency category for September 2020

Measure	Category 1	Category 2	Category 3	Total
Number of patients treated	13,907	13,994	9,983	37,884
Patients treated within the clinically recommended time	94.4%	85.3%	79.0%	87.0%
	Target 98%	Target 95%	Target 95%	Target N/A
Number of patients waiting longer than the clinically recommended time – ready of surgery	96	567	885	1,548
Patients waiting within the clinically recommended time- ready for surgery	96.7%	95.8%	97.3%	96.9%
Median waiting time to treatment (days)	15	58	310	41
90 <sup>th</sup> percentile waiting time to treatment (days)	29	102	404	342

### Quarterly elective surgery information by urgency category for September 2019

Measure	Category 1	Category 2	Category 3	Total
Number of patients treated	12,640	14,641	9,038	36,319
Patients treated within the clinically recommended time	97.1%	93.4%	95.8%	95.3%
	Target 98%	Target 95%	Target 95%	Target NA
Number of patients waiting longer than the clinically recommended time – ready of surgery	65	374	223	662
Patients waiting within the clinically recommended time- ready for surgery	97.6%	97.1%	99.4%	98.7%
Median waiting time to treatment (days)	16	58	208	41
90 <sup>th</sup> percentile waiting time to treatment (days)	28	89	359	275

**Source:** Queensland Health Elective Surgery Data Collection

**Notes:** Waiting numbers are those waiting at the end of the quarter. All data should be considered preliminary and subject to change.

[View all measure indicators here](#)

## Specialist Outpatients – Statewide quarterly performance comparison (Sept 2020 v Sept 2019)

September 2020

### SOPD Waiting: Statewide

Patients waiting for an initial service event in a specialist outpatient clinic at 1 October 2020

Specialty Type	Category 1	Category 2	Category 3	All
Medical	10,403	38,846	30,036	79,285
Surgical	8,109	47,712	81,784	137,605
Total	18,512	86,558	111,820	216,890

% Patients waiting within the clinically recommended time at 1 October 2020

Specialty	Category 1	Category 2	Category 3	All
Cardiac Surgery	88%	90%	93%	90%
Cardiology	78%	79%	74%	77%
Dermatology	73%	51%	81%	62%
Ear Nose and Throat	88%	62%	77%	75%
Endocrinology	82%	76%	94%	81%
Gastroenterology	46%	49%	88%	54%
General Medicine	80%	89%	90%	88%
General Surgery	84%	64%	85%	75%
Geriatrics	83%	80%	97%	82%
Gynecology	90%	77%	90%	84%
Medical Other	59%	58%	90%	73%
Nephrology	62%	87%	98%	89%
Neurology	81%	73%	88%	80%
Neurosurgery	43%	39%	86%	53%
Obstetrics	96%	97%	100%	99%
Oncology	85%	95%	98%	88%
Ophthalmology	65%	33%	67%	53%
Orthopedic	91%	51%	76%	71%
Paediatric Medicine	81%	65%	90%	79%
Paediatric Surgery	67%	51%	90%	70%

Pain Management	77%	72%	95%	90%
Palliative Care	89%	100%	100%	91%
Plastic and Reconstructive Surgery	50%	68%	68%	65%
Respiratory	78%	63%	77%	69%
Rheumatology	48%	46%	82%	59%
Surgical Other	79%	29%	76%	53%
Urology	82%	44%	78%	59%
Vascular Surgery	64%	41%	73%	56%

[View all measure definitions here](#)

## SOPD Seen: Statewide

Patients seen for an initial service event in a specialist outpatient clinic during July, August, September 2020

Specialty Type	Category 1	Category 2	Category 3	All
Medical	32,362	30,624	14,983	77,969
Surgical	49,535	28,552	15,640	93,727
Total	81,897	59,176	30,623	171,696

Median waiting times for patients (days) during July, August, September 2020

Specialty	Category 1	Category 2	Category 3	All
Cardiac Surgery	14	40	128	17
Cardiology	21	73	308	43
Dermatology	20	82	342	53
Ear Nose and Throat	15	92	437	79
Endocrinology	22	62	115	40
Gastroenterology	32	88	227	47
General Medicine	14	35	45	22
General Surgery	13	69	300	31
Geriatrics	10	60	63	42
Gynecology	15	65	322	51
Medical Other	14	62	254	42
Nephrology	22	70	182	63
Neurology	24	69	329	59
Neurosurgery	31	91	46	51
Obstetrics	9	36	50	34
Oncology	11	29	84	12
Ophthalmology	-	229	371	15
Orthopedic	8	57	280	10
Paediatric Medicine	14	56	95	44
Paediatric Surgery	16	114	378	112
Pain Management	22	62	236	86
Palliative Care	8	20	1	8
Plastic and Reconstructive Surgery	20	118	435	29
Respiratory	19	74	292	38
Rheumatology	27	81	225	69

Surgical Other	9	111	354	15
Urology	25	91	337	41
Vascular Surgery	23	131	271	42

**Source:** Queensland Health Specialist Outpatient Data Collection

**Notes:** All data should be considered preliminary and subject to change.

[View all measure definitions here](#)



September 2019

SOPD Waiting: Statewide

Patients waiting for an initial service event in a specialist outpatient clinic at 1 October 2019

Specialty Type	Category 1	Category 2	Category 3	All
Medical	10,246	39,321	32,129	81,696
Surgical	8,655	44,381	84,168	137,204
Total	18,901	83,702	116,297	218,900

% Patients waiting within the clinically recommended time at 1 October 2019

Specialty	Category 1	Category 2	Category 3	All
Cardiac Surgery	95%	95%	94%	95%
Cardiology	74%	69%	86%	76%
Dermatology	73%	49%	94%	66%
Diabetes	100%	100%	-	100%
Ear Nose and Throat	77%	59%	77%	74%
Endocrinology	51%	63%	91%	66%
Gastroenterology	58%	56%	95%	63%
General Medicine	75%	87%	99%	88%
General Surgery	85%	62%	91%	77%
Geriatrics	71%	75%	99%	80%
Gynaecology	82%	68%	94%	83%
Medical Other	53%	54%	93%	73%
Nephrology	71%	86%	98%	89%
Neurology	68%	60%	85%	70%
Neurosurgery	31%	50%	85%	59%
Obstetrics	95%	94%	100%	98%
Oncology	83%	95%	100%	87%
Ophthalmology	60%	39%	82%	66%
Orthopaedic	90%	52%	86%	79%
Paediatric Medicine	74%	60%	93%	78%
Paediatric Surgery	67%	70%	95%	85%
Pain Management	60%	93%	99%	98%
Palliative Care	89%	96%	100%	91%

Plastic and Reconstructive Surgery	40%	46%	77%	61%
Respiratory	80%	56%	79%	66%
Rheumatology	36%	53%	89%	66%
Surgical Other	66%	39%	94%	64%
Urology	59%	42%	80%	58%
Vascular Surgery	32%	43%	92%	59%

[View all measure definitions here](#)

## SOPD Seen: Statewide

Patients seen for an initial service event in a specialist outpatient clinic during July, August, September 2019

Specialty Type	Category 1	Category 2	Category 3	All
Medical	31,393	29,993	14,949	76,335
Surgical	47,141	26,739	16,111	89,991
Total	78,534	56,732	31,060	166,326

Median waiting times for patients (days) during July, August, September 2019

Specialty	Category 1	Category 2	Category 3	All
Cardiac Surgery	13	31	72	15
Cardiology	23	79	216	51
Dermatology	22	98	279	78
Ear Nose and Throat	16	78	356	63
Endocrinology	22	73	98	56
Gastroenterology	31	66	130	42
General Medicine	15	43	29	23
General Surgery	14	62	153	28
Geriatrics	5	53	57	38
Gynaecology	21	80	228	63
Medical Other	18	56	219	43
Nephrology	28	78	186	65
Neurology	29	83	177	71
Neurosurgery	44	94	70	72
Obstetrics	10	42	45	35
Oncology	11	30	83	12
Ophthalmology	0	129	333	29

Orthopaedic	8	67	253	12
Paediatric Medicine	15	63	137	55
Paediatric Surgery	17	70	264	63
Pain Management	22	61	174	116
Palliative Care	8	22	44	9
Plastic and Reconstructive Surgery	24	95	363	37
Respiratory	18	84	271	43
Rheumatology	28	85	202	83
Surgical Other	8	82	149	14
Urology	28	82	215	42
Vascular Surgery	27	76	266	55

**Source:** Queensland Health Specialist Outpatient Data Collection

**Notes:** All data should be considered preliminary and subject to change.

[View all measure definitions here](#)